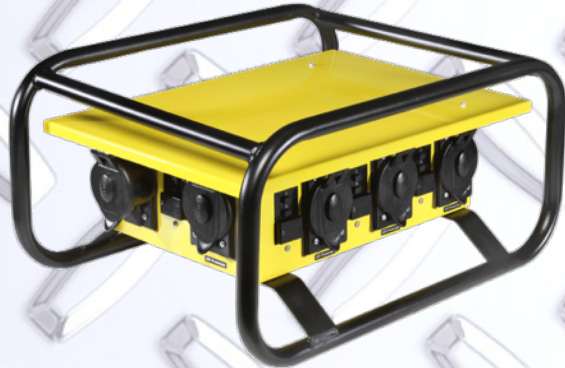


# Single Phase Power Boxes

50 amp 125/250V



6506 G



8706GU

## Specifications:

- UL1640 construction site approved.
- Approved for wet locations.
- Heavy duty impact/flame resistant weatherproof covers.
- GFCI module provides:
  - Open neutral protection
  - Reverse phasing protection
  - 240V shut-off with indicator light
- Available in stainless steel.

Catalog Number	Rating	Power Inlet	Power Outlet	Receptacles		GFI	Overload Protected	Weight
				Qty	Type			
6506G	U.L Listed 50 Amp 125/250 Volt	CS6375	CS6369	1 6	L6-30R L5-20R	No Yes	Yes	35
6506GU*	U.L Listed 50 Amp 125/250 Volt	CS6375	CS6369	1 6	L6-30R 5-20R	No Yes	Yes	34
8706G	U.L Listed 50 Amp 125/250 Volt	CS6375	CS6369	1 6	L6-30R L5-20R	No Yes	Yes	39



# CONSTRUCTION ELECTRICAL PRODUCTS

8706GU*	U.L Listed 50 Amp 125/250 Volt	CS6375	CS6369	1 6	L6-30R 5-20R	No Yes	Yes	38
---------	--------------------------------------	--------	--------	--------	-----------------	-----------	-----	----

\*U designates strait blade 20A 125V receptacles